

Cat. No. 022  
R 02 – 09/04

**Culligan®**

**PHARMA SYSTEM**

**45-80-120**

**PARTS LIST**  
**From 1998**

**CE**

*Culligan reserves the right to change any technical or design specifications*

---

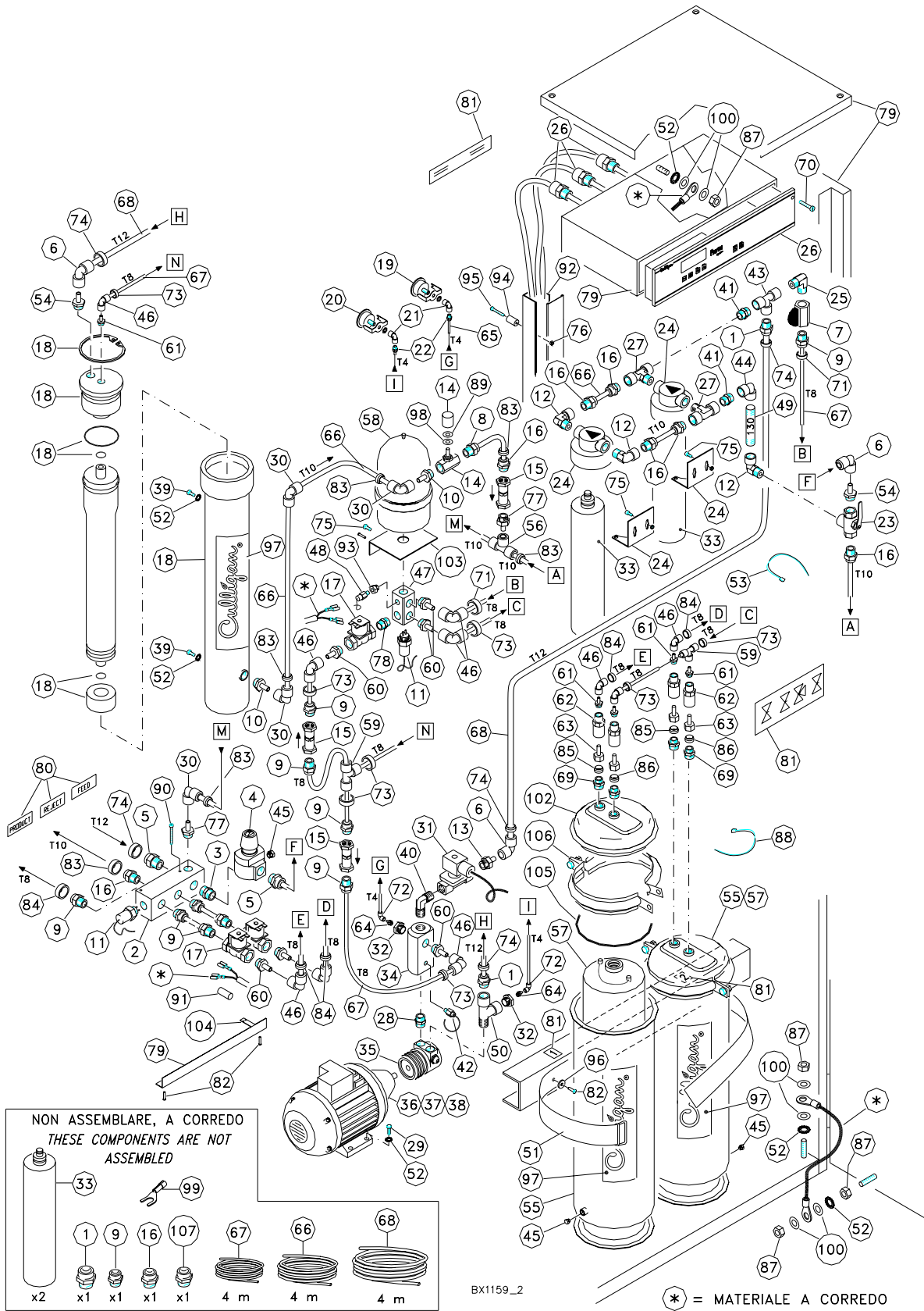
**CULLIGAN ITALIANA S.p.A. - Via Gandolfi, 6 - 40057 Cadriano di Granarolo E. BO (ITALY)**  
**Phone +39/0516017111 – Telefax +39/051765602**

---

**Quality System Certified according to UNI EN ISO 9001 – 2000 Norm**

---

# PHARMA 45 - PARTS LIST



BX1159\_2

\* = MATERIALE A CORREDO

## PHARMA 45 - PARTS LIST

ITEM	DESCRIPTION	Q.TY		CAT. NO.	ITEM	DESCRIPTION	Q.TY		CAT. NO.
-	PHARMA 45, ASSEMBLY	-		7608-18	54	FITTING AUTO. S5	2	<b>B</b>	21011-62
1	STRAINGHT FITTING AUTO. S1 M 3/8"	3	<b>B</b>	21011-58	55	HOUSING 10 ST.ST.	2		7801-81
2	SLEEVE 50X60X170 PVC	1		7557-29	56	FITTING AUTO. S2	1	<b>B</b>	21011-92
3	NIPPLE 1/2" F2500	1	<b>B</b>	21010-06	57	REFILL MB 10	2		7598-07
4	PRESSURE REDUCING VALVE 1/2"	1		7516-27	58	HYDROPHORE	1		7388-18
5	FITTING AUTO. S1 M 1/2"	2	<b>B</b>	21010-07	59	«T» FITTING AUTO. S"	2	<b>B</b>	21011-66
6	«L» FITTING AUTO. S3	3	<b>B</b>	21011-88	60	FITTING AUTO. S5 3/8"	7	<b>B</b>	21007-17
7	SPHERE VALVE OT CR 3/8"	1		7558-34	61	FITTING AUTO. S5 1/4"	5	<b>B</b>	21008-67
8	FITTING AUTO. S1 M 1/4"	1	<b>B</b>	21011-49	62	JOINT 1/4"	4		7541-86
9	FITTING AUTO. S1 M 3/8"	11	<b>B</b>	21007-16	63	JOINT 1/4"	4		7557-78
10	FITTING AUTO. S5 1/4"	2	<b>B</b>	21011-60	64	FITTING AUTO. S5	2	<b>B</b>	21009-23
11	CELL CCK5 GRAY PVC	2		7808-47	65	FLEXIBLE HOSE 04X2	4	<b>C</b>	21009-80
12	«L» UNIVERSAL FITTING 3/8"MF	3	<b>B</b>	21010-08	66	FLEXIBLE HOSE 10X8	6	<b>C</b>	21009-81
13	FITTING AUTO. S5 1/2"	1	<b>B</b>	21010-09	67	FLEXIBLE HOSE 08X6	11	<b>C</b>	21010-02
14	VALVE 1/4" FF	1		7808-71	68	FLEXIBLE HOSE 12X10	5	<b>C</b>	21009-82
15	CHECK VALVE DELRIN 3/8"	3		7514-91	69	NIPPLE 3/8" X 1/4"	4	<b>B</b>	21010-21
16	FITTING AUTO. S1 M 3/8"	8	<b>B</b>	21011-50	70	SCREW	8	<b>C</b>	21009-54
17	ELECTRIC VALVE 3/8"	3		7550-08	71	FITTING AUTO. S19	2	<b>B</b>	21010-22
18	VESSEL INOX FOR MODULE FT	1		7562-69	72	FITTING AUTO. S3	2	<b>B</b>	21009-19
19	PRESSURE GAUGE 1/8 1/8"	1		7515-26	73	FITTING AUTO. S19	8	<b>B</b>	21010-23
20	PRESSURE GAUGE 1/8 1/8"	1		7515-27	74	FITTING AUTO. S19	5	<b>B</b>	21010-24
21	FITTING UNIVERSAL 1/8"	2	<b>B</b>	21009-11	75	SCREW M5X10 AISI 304	8	<b>C</b>	21009-75
22	FITTING AUTO. S 1/8"	2	<b>B</b>	21011-47	76	NUT M5 AISI 316	2	<b>C</b>	21006-71
23	SPHERE VALVE 3/8"	1		7560-96	77	FITTING AUTO. S5 3/8"	2	<b>B</b>	21011-61
24	HEAD W/ BRACKET	2		7809-50	78	NIPPLE PVC 3/8"	1	<b>B</b>	21009-66
25	UNIVERSAL FITTING 3/8"	1	<b>B</b>	21010-10	79	CABINET	1		7804-68
26	ELECTRONIC PANEL	1		7599-61	80	LABEL KIT	1		7553-11
27	UNIVERSAL FITTING 3/8"	2	<b>B</b>	21010-11	81	LABEL KIT	1		7547-70
28	NIPPLE 1/2"	1	<b>B</b>	21010-12	82	RIVET 4X16	4	<b>C</b>	21010-25
29	SCREW M6X20 AISI 316	4	<b>C</b>	21010-15	83	FITTING AUTO. S19	6	<b>B</b>	21010-26
30	FITTING AUTO. S3	4	<b>B</b>	21011-90	84	FITTING AUTO. S19	5	<b>B</b>	21010-27
31	ELECTRIC VALVE	1		7558-35	85	FITTING AUTO. S19	2	<b>B</b>	21010-28
32	ADAPTER 3/8"	2	<b>B</b>	21010-13	86	FITTING AUTO. S19	2	<b>B</b>	21010-29
33	CARDRIDGE RAPID SYSTEM	4		7809-51	87	NUT M06	7	<b>C</b>	21007-72
34	SLEEVE 1/2" X 1/4" X 3/8"	1		7516-65	88	STRIP	5	<b>G</b>	21007-94
35	PUMP	1		7391-02	89	WASHER	1	<b>C</b>	21010-30
36	JOINT	1		7526-13	90	SCREW M05x045 AISI 316	2	<b>C</b>	21007-93
37	FLANGE	1		7526-12	91	SLEEVE	0,1		7510-83
38	MOTOR 4P 00.37 KW 220-50 1 PH	1		7516-25	92	CLOSED DRAIN	1		7421-73
39	SCREW M6X14 AISI 304	2	<b>C</b>	21009-33	93	ADAPTER AISI 316	1		w941-26
40	UNIVERSAL FITTING 1/2"	1	<b>B</b>	21010-14	94	SPACER PVC GRAY	2		7565-79
41	NIPPLE OT 3/8"	2	<b>B</b>	21010-16	95	SCREW M5X35 AISI 316	2	<b>C</b>	21010-31
42	PRESSURE SWITCH 1/4"	1		7557-76	96	WASHER	2	<b>C</b>	21010-32
43	UNIVERSAL FITTING 3/8" FFF	1	<b>B</b>	21009-16	97	LABEL	3		ADV017
44	UNIVERSAL FITTING 3/8" FF	1	<b>B</b>	21010-17	98	RUBBER PLUG	1		7202-02
45	PLUG 1/4"	3	<b>B</b>	21010-18	99	KEY 50X20 AISI 304	1		7517-22
46	«L» FITTING AUTO. S3	10	<b>B</b>	21007-15	100	WASHER	8	<b>C</b>	21009-77
47	SLEEVE PVC 1/2"	1		7557-34	101	MODULE RO	1		7562-68
48	PRESSURE SWITCH 1/8"	1		7557-77	102	COVER	2		7801-84
49	TUBING AISI 316 M	0,15		w920-96	103	BRACKET	1		7565-81
50	UNIVERSAL FITTING 3/8"	1	<b>B</b>	21010-19	104	SOLENOID VALVE SUPPORT	1		7565-80
51	BELT	1		7561-52	105	O-RING	2		7587-98
52	WASHER	11	<b>C</b>	21010-20	106	CLAMP	2		7587-99
53	CLAMP	5	<b>G</b>	21007-51	107	FITTING	1	<b>B</b>	21010-33

Confezioni da: **A**= 2; **B**= 5; **C**= 10; **D**= 15; **E**= 20; **F**= 25; **G**= 50.

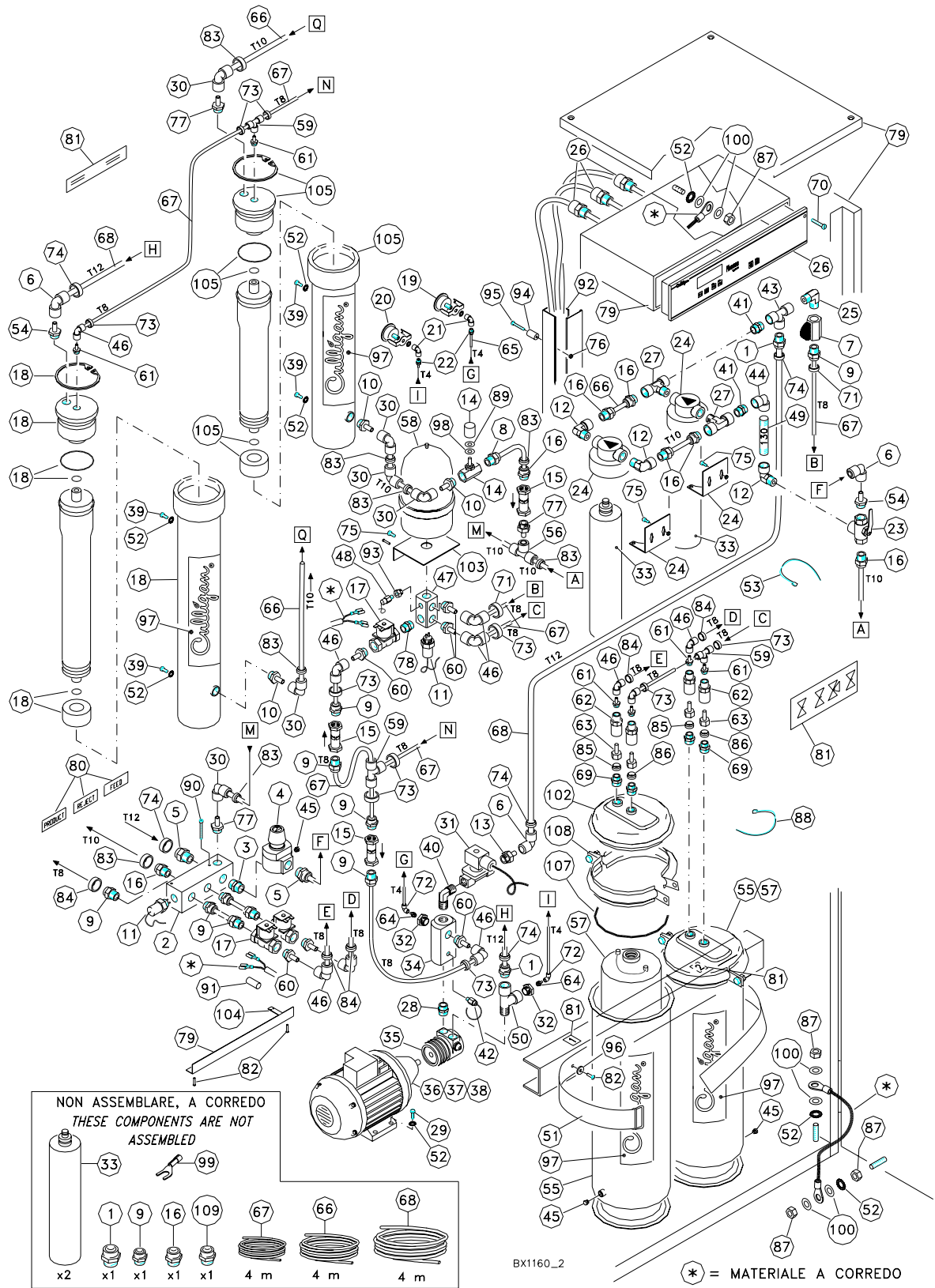


## PHARMA 80 - PARTS LIST

ITEM	DESCRIPTION	Q.TY		CAT. NO.	ITEM	DESCRIPTION	Q.TY		CAT. NO.
-	PHARMA 80, ASSEMBLY	-		7608-19	54	FITTING AUTO. S5	2	<b>B</b>	21011-62
1	STRAINGHT FITTING AUTO. S1 M 3/8"	3	<b>B</b>	21011-58	55	HOUSING 10 ST.ST.	2		7801-81
2	SLEEVE 50X60X170 PVC	1		7557-29	56	FITTING AUTO. S2	1	<b>B</b>	21011-92
3	NIPPLE 1/2" F2500	1	<b>B</b>	21010-06	57	REFILL MB 10	2		7598-07
4	PRESSURE REDUCING VALVE 1/2"	1		7516-27	58	HYDROPHORE	1		7388-18
5	FITTING AUTO. S1 M 1/2"	2	<b>B</b>	21010-07	59	«T» FITTING AUTO. S"	2	<b>B</b>	21011-66
6	«L» FITTING AUTO. S3	3	<b>B</b>	21011-88	60	FITTING AUTO. S5 3/8"	7	<b>B</b>	21007-17
7	SPHERE VALVE OT CR 3/8"	1		7558-34	61	FITTING AUTO. S5 1/4"	5	<b>B</b>	21008-67
8	FITTING AUTO. S1 M 1/4"	1	<b>B</b>	21011-49	62	JOINT 1/4"	4		7541-86
9	FITTING AUTO. S1 M 3/8"	11	<b>B</b>	21007-16	63	JOINT 1/4"	4		7557-78
10	FITTING AUTO. S5 1/4"	2	<b>B</b>	21011-60	64	FITTING AUTO. S5	2	<b>B</b>	21009-23
11	CELL CCK5 GRAY PVC	2		7808-47	65	FLEXIBLE HOSE 04X2	4	<b>C</b>	21009-80
12	«L» UNIVERSAL FITTING 3/8"MF	3	<b>B</b>	21010-08	66	FLEXIBLE HOSE 10X8	6	<b>C</b>	21009-81
13	FITTING AUTO. S5 1/2"	1	<b>B</b>	21010-09	67	FLEXIBLE HOSE 08X6	11	<b>C</b>	21010-02
14	VALVE 1/4" FF	1		7808-71	68	FLEXIBLE HOSE 12X10	5	<b>C</b>	21009-82
15	CHECK VALVE DELRIN 3/8"	3		7514-91	69	NIPPLE 3/8" X 1/4"	4	<b>B</b>	21010-21
16	FITTING AUTO. S1 M 3/8"	8	<b>B</b>	21011-50	70	SCREW	8	<b>C</b>	21009-54
17	ELECTRIC VALVE 3/8"	3		7550-08	71	FITTING AUTO. S19	2	<b>B</b>	21010-22
18	VESSEL INOX FOR MODULE FT	1		7562-69	72	FITTING AUTO. S3	2	<b>B</b>	21009-19
19	PRESSURE GAUGE 1/8 1/8"	1		7515-26	73	FITTING AUTO. S19	8	<b>B</b>	21010-23
20	PRESSURE GAUGE 1/8 1/8"	1		7515-27	74	FITTING AUTO. S19	5	<b>B</b>	21010-24
21	FITTING UNIVERSAL 1/8"	2	<b>B</b>	21009-11	75	SCREW M5X10 AISI 304	8	<b>C</b>	21009-75
22	FITTING AUTO. S 1/8"	2	<b>B</b>	21011-47	76	NUT M5 AISI 316	2	<b>C</b>	21006-71
23	SPHERE VALVE 3/8"	1		7560-96	77	FITTING AUTO. S5 3/8"	2	<b>B</b>	21011-61
24	HEAD W/ BRACKET	2		7809-50	78	NIPPLE PVC 3/8"	1	<b>B</b>	21009-66
25	UNIVERSAL FITTING 3/8"	1	<b>B</b>	21010-10	79	CABINET	1		7804-68
26	ELECTRONIC PANEL	1		7599-61	80	LABEL KIT	1		7553-11
27	UNIVERSAL FITTING 3/8"	2	<b>B</b>	21010-11	81	LABEL KIT	1		7547-70
28	NIPPLE 1/2"	1	<b>B</b>	21010-12	82	RIVET 4X16	4	<b>C</b>	21010-25
29	SCREW M6X20 AISI 316	4	<b>C</b>	21010-15	83	FITTING AUTO. S19	6	<b>B</b>	21010-26
30	FITTING AUTO. S3	4	<b>B</b>	21011-90	84	FITTING AUTO. S19	5	<b>B</b>	21010-27
31	ELECTRIC VALVE	1		7558-35	85	FITTING AUTO. S19	2	<b>B</b>	21010-28
32	ADAPTER 3/8"	2	<b>B</b>	21010-13	86	FITTING AUTO. S19	2	<b>B</b>	21010-29
33	CARDRIDGE RAPID SYSTEM	4		7809-51	87	NUT M06	7	<b>C</b>	21007-72
34	SLEEVE 1/2" X 1/4" X 3/8"	1		7516-65	88	STRIP	5	<b>G</b>	21007-94
35	PUMP	1		7391-02	89	WASHER	1	<b>C</b>	21010-30
36	JOINT	1		7526-13	90	SCREW M05x045 AISI 316	2	<b>C</b>	21007-93
37	FLANGE	1		7526-12	91	SLEEVE	0,1		7510-83
38	MOTOR 4P 00.37 KW 220-50 1 PH	1		7516-25	92	CLOSED DRAIN	1		7421-73
39	SCREW M6X14 AISI 304	2	<b>C</b>	21009-33	93	ADAPTER AISI 316	1		w941-26
40	UNIVERSAL FITTING 1/2"	1	<b>B</b>	21010-14	94	SPACER PVC GRAY	2		7565-79
41	NIPPLE OT 3/8"	2	<b>B</b>	21010-16	95	SCREW M5X35 AISI 316	2	<b>C</b>	21010-31
42	PRESSURE SWITCH 1/4"	1		7557-76	96	WASHER	2	<b>C</b>	21010-32
43	UNIVERSAL FITTING 3/8" FFF	1	<b>B</b>	21009-16	97	LABEL	3		ADV017
44	UNIVERSAL FITTING 3/8" FF	1	<b>B</b>	21010-17	98	RUBBER PLUG	1		7202-02
45	PLUG 1/4"	3	<b>B</b>	21010-18	99	KEY 50X20 AISI 304	1		7517-22
46	«L» FITTING AUTO. S3	10	<b>B</b>	21007-15	100	WASHER	8	<b>C</b>	21009-77
47	SLEEVE PVC 1/2"	1		7557-34	101	MODULE RO	1		7562-68
48	PRESSURE SWITCH 1/8"	1		7557-77	102	COVER	2		7801-84
49	TUBING AISI 316 M	0,15		w920-96	103	BRACKET	1		7565-81
50	UNIVERSAL FITTING 3/8"	1	<b>B</b>	21010-19	104	SOLENOID VALVE SUPPORT	1		7565-80
51	BELT	1		7561-52	105	O-RING	2		7587-98
52	WASHER	11	<b>C</b>	21010-20	106	CLAMP	2		7587-99
53	CLAMP	5	<b>G</b>	21007-51	107	FITTING	1	<b>B</b>	21010-33

Confezioni da: **A**= 2; **B**= 5; **C**= 10; **D**= 15; **E**= 20; **F**= 25; **G**= 50

# PHARMA 120 - PARTS LIST



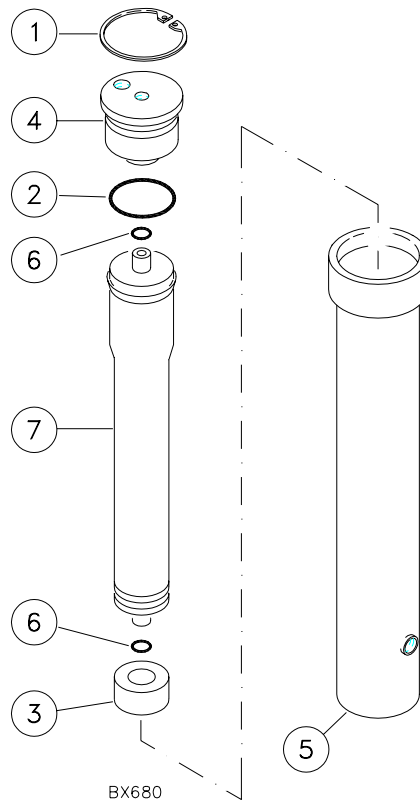
BX1160\_2

\* = MATERIALE A CORREDO

## PHARMA 120 - PARTS LIST

ITEM	DESCRIPTION	Q.TY		CAT. NO.	ITEM	DESCRIPTION	Q.TY		CAT. NO.
-	PHARMA 120, ASSEMBLY	-		7608-20	55	HOUSING 10 ST.ST.	2		7801-81
1	STRAIGHT FITTING AUTO. S1 M 3/8"	3	<b>B</b>	21011-58	56	FITTING AUTO. S2	1	<b>B</b>	21011-92
2	SLEEVE 50X60X170 PVC	1		7557-29	57	REFILL MB 10	2		7598-07
3	NIPPLE 1/2" F2500	1	<b>B</b>	21010-06	58	HYDROPHORE	1		7388-18
4	PRESSURE REDUCING VALVE 1/2"	1		7516-27	59	«T» FITTING AUTO. S"	3	<b>B</b>	21011-66
5	FITTING AUTO. S1 M 1/2"	2	<b>B</b>	21010-07	60	FITTING AUTO. S5 3/8"	7	<b>B</b>	21007-17
6	«L» FITTING AUTO. S3	3	<b>B</b>	21011-88	61	FITTING AUTO. S5 1/4"	6	<b>B</b>	21008-67
7	SPHERE VALVE OT CR 3/8"	1		7558-34	62	JOINT 1/4"	4		7541-86
8	FITTING AUTO. S1 M 1/4"	1	<b>B</b>	21011-49	63	JOINT 1/4"	4		7557-78
9	FITTING AUTO. S1 M 3/8"	11	<b>B</b>	21007-16	64	FITTING AUTO. S5	2	<b>B</b>	21009-23
10	FITTING AUTO. S5 1/4"	3	<b>B</b>	21011-60	65	FLEXIBLE HOSE 04X2	4	<b>C</b>	21009-80
11	CELL CCK5 GRAY PVC	2		7808-47	66	FLEXIBLE HOSE 10X8	6	<b>C</b>	21009-81
12	«L» UNIVERSAL FITTING 3/8"MF	3	<b>B</b>	21010-08	67	FLEXIBLE HOSE 08X6	11	<b>C</b>	21010-02
13	FITTING AUTO. S5 1/2"	1	<b>B</b>	21010-09	68	FLEXIBLE HOSE 12X10	5	<b>C</b>	21009-82
14	VALVE 1/4" FF	1		7808-71	69	NIPPLE 3/8" X 1/4"	4	<b>B</b>	21010-21
15	CHECK VALVE DELRIN 3/8"	3		7514-91	70	SCREW	8	<b>C</b>	21009-54
16	FITTING AUTO. S1 M 3/8"	8	<b>B</b>	21011-50	71	FITTING AUTO. S19	2	<b>B</b>	21010-22
17	ELECTRIC VALVE 3/8"	3		7550-08	72	FITTING AUTO. S3	2	<b>B</b>	21009-19
18	VESSEL INOX FOR MODULE FT	1		7561-51	73	FITTING AUTO. S19	10	<b>B</b>	21010-23
19	PRESSURE GAUGE 1/8 1/8"	1		7515-26	74	FITTING AUTO. S19	5	<b>B</b>	21010-24
20	PRESSURE GAUGE 1/8 1/8"	1		7515-27	75	SCREW M5X10 AISI 304	8	<b>C</b>	21009-75
21	FITTING UNIVERSAL 1/8"	2	<b>B</b>	21009-11	76	NUT M5 AISI 316	2	<b>C</b>	21006-71
22	FITTING AUTO. S 1/8"	2	<b>B</b>	21011-47	77	FITTING AUTO. S5 3/8"	3	<b>B</b>	21011-61
23	SPHERE VALVE 3/8"	1		7560-96	78	NIPPLE PVC 3/8"	1	<b>B</b>	21009-66
24	HEAD W/ BRACKET	2		7809-50	79	CABINET	1		7804-68
25	UNIVERSAL FITTING 3/8"	1	<b>B</b>	21010-10	80	LABEL KIT	1		7553-11
26	ELECTRONIC PANEL	1		7599-61	81	LABEL KIT	1		7547-70
27	UNIVERSAL FITTING 3/8"	2	<b>B</b>	21010-11	82	RIVET 4X16	4	<b>C</b>	21010-25
28	NIPPLE 1/2"	1	<b>B</b>	21010-12	83	FITTING AUTO. S19	8	<b>B</b>	21010-26
29	SCREW M6X20 AISI 316	4	<b>C</b>	21010-15	84	FITTING AUTO. S19	5	<b>B</b>	21010-27
30	FITTING AUTO. S3	4	<b>B</b>	21011-90	85	FITTING AUTO. S19	2	<b>B</b>	21010-28
31	ELECTRIC VALVE	1		7558-35	86	FITTING AUTO. S19	2	<b>B</b>	21010-29
32	ADAPTER 3/8"	2	<b>B</b>	21010-13	87	NUT M06	7	<b>C</b>	21007-72
33	CARDRIDGE RAPID SYSTEM	4		7809-51	88	STRIP	5	<b>G</b>	21007-94
34	SLEEVE 1/2" X 1/4" X 3/8"	1		7516-65	89	WASHER	1	<b>C</b>	21010-30
35	PUMP	1		7391-02	90	SCREW M05X045 AISI 316	2	<b>C</b>	21007-93
36	JOINT	1		7526-13	91	SLEEVE	0,1		7510-83
37	FLANGE	1		7526-12	92	CLOSED DRAIN	1		7421-73
38	MOTOR 4P 00.37 KW 220-50 1 PH	1		7516-25	93	ADAPTER AISI 316	1		w941-26
39	SCREW M6X14 AISI 304	4	<b>C</b>	21009-33	94	SPACER PVC GRAY	2		7565-79
40	UNIVERSAL FITTING 1/2"	1	<b>B</b>	21010-14	95	SCREW M5X35 AISI 316	2	<b>C</b>	21010-31
41	NIPPLE OT 3/8"	2	<b>B</b>	21010-16	96	WASHER	2	<b>C</b>	21010-32
42	PRESSURE SWITCH 1/4"	1		7557-76	97	LABEL	4		ADV017
43	UNIVERSAL FITTING 3/8" FFF	1	<b>B</b>	21009-16	98	RUBBER PLUG	1		7202-02
44	UNIVERSAL FITTING 3/8" FF	1	<b>B</b>	21010-17	99	KEY 50X20 AISI 304	1		7517-22
45	PLUG 1/4"	3	<b>B</b>	21010-18	100	WASHER	8	<b>C</b>	21009-77
46	«L» FITTING AUTO. S3	10	<b>B</b>	21007-15	101	MODULE RO	1		752447
47	SLEEVE PVC 1/2"	1		7557-34	102	COVER	2		7801-84
48	PRESSURE SWITCH 1/8"	1		7557-77	103	BRACKET	1		7565-81
49	TUBING AISI 316 M	0,15		w920-96	104	SOLENOID VALVE SUPPORT	1		7565-80
50	UNIVERSAL FITTING 3/8"	1	<b>B</b>	21010-19	105	VESSEL INOX FOR MODULE	1		7562-69
51	BELT	1		7561-52	106	R.O. MODULE	1		7562-68
52	WASHER	13	<b>C</b>	21010-20	107	O-RING	2		7587-98
53	CLAMP	5	<b>G</b>	21007-51	108	CLAMP	2		7587-99
54	FITTING AUTO. S5	2	<b>B</b>	21011-62	109	FITTING	1	<b>B</b>	21010-33

Confezioni da: **A**= 2; **B**= 5; **C**= 10; **D**= 15; **E**= 20; **F**= 25; **G**= 50



ITEM	DESCRIPTION	PHARMA 45		PHARMA 80		PHARMA 120			
		RO 4014		RO 4021		RO 4014		RO4021	
		Q.TY	CAT.NO.	Q.TY	CAT.NO.	Q.TY	CAT.NO.	Q.TY	CAT. NO.
-	VESSEL INOX	-	7562-69	-	7561-51	-	7562-69	-	7561-51
1	SEEGER <b>C</b>	1	7805-05	1	7805-05	1	7805-05	1	7805-05
2	O-RING	1	7262-56	1	7262-56	1	7262-56	1	7262-56
3	PLUG	1	7805-06	1	7805-06	1	7805-06	1	7805-06
4	CAP	1	7805-04	1	7805-04	1	7805-04	1	7805-04
5	VESSEL INOX	1	7805-08	1	7805-08	1	7805-08	1	7805-08
6	O-RING <b>C</b>	2	7369-95	2	7369-95	2	7369-95	2	7369-95
7	MODULE RO	1	7562-68	1	7524-47	1	7562-68	1	7524-47

NOTE: ITEMS 6 AND 7 (RO MODULE AND O-RING) ARE NOT INCLUDED IN ASSEMBLY PARTS NO. 7562-69 AND 7561-51 AND SHOULD BE ORDERED SEPARATELY.

N.B.: GLI ITEM 6 E 7 SONO ESCLUSI DAI CAT. N. 7562-69 E 7561-51 ASSEMBLATI, SONO DA ORDINARE SEPARATAMENTE.

Confezioni da: **A= 2; B= 5; C= 10; D= 15; E= 20; F= 25; G= 50**